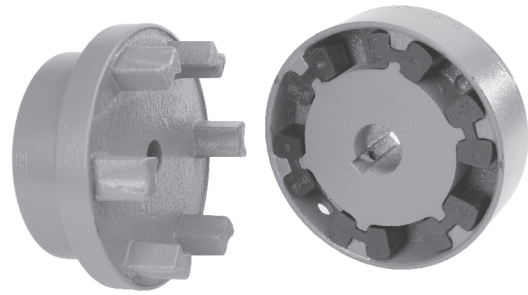
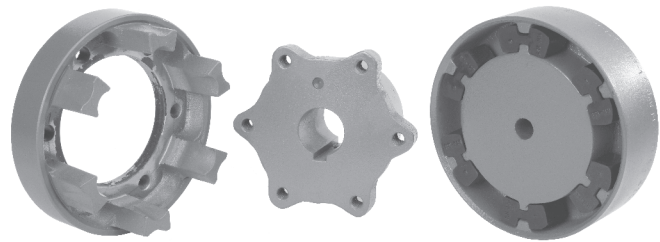


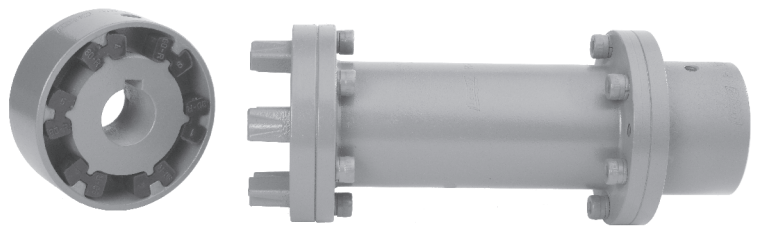
Rathi N-Flex couplings consists of graded cast iron hubs and a set of 'H' shaped highly resilient blocks which accommodates parallel, angular and axial misalignments & absorbs torsional vibrations. Rathi N-Flex spacer couplings (Type - RNS) are suitable for 'Back Pullout Pumps' in which the impeller can be disassembled without disturbing motor and pump from the base frame.



RN (B)



RN (A)



RNS(H)

FEATURES

SIMPLICITY OF CONSTRUCTION

Easy to assemble & disassemble. Suitable for reversing operation.

VARYING STIFFNESS CHARACTERISTICS

Special H shaped inserts provide progressively increasing stiffness characteristics, hence ensure effective shocks & vibration absorption. Special elastomer can be supplied to suit specific application needs.

NO LUBRICATION

RN/RNS couplings do not require lubrication of any kind.

Application :

Mainly for pump applications such as :

Water Pumps, Slurry Pumps, Sewage Pumps, Back Pull out Pumps, Multistage Pumps, Spilt Case Pumps, API Pumps, Chemical Process Pumps, Metering/Dosing Pumps, Gear Pumps, Paper Stock Pumps, Screw Pumps, Vacuum Pumps, Fire Pumps, High Pressure Pumps.

SIMPLE / EASY MAINTENANCE

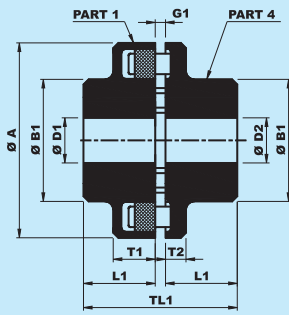
No complicated mechanism to demand adjustment or maintenance. Inspection and replacement of inserts is easy.

LOW OPERATIONAL COST

Only wear part is low cost inserts which make coupling economical in long run.

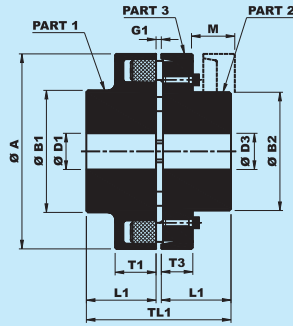
SMOOTH & QUIET OPERATION

Reduces vibration & noise arising from severe torque fluctuations. Operating temp. is -30°C to $+100^{\circ}\text{C}$.



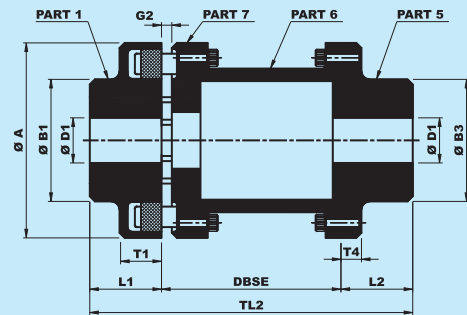
RN(B)

SIZES - 68 TO 250



RN(A)

SIZES - 110 TO 250



RNS(H)

SIZES - 80 TO 250

Coupling Size	Rated Torque N-m	Kw at 100 RPM	Max. Speed RPM	Max. Bore (mm)			Dimensions (mm)														Weight (Kg)			M.I. (WR ² Kg-m ²)		
				D1	D2	D3	ØA	ØB1	ØB2	ØB3	L1	L2	T1	T2	T3	T4	M	DBSE	TL1	TL2	RN (B)	RN (A)	RNS (H)	RN (B)	RN (A)	RNS (H)
68 B	34	0.36	5000	24	28	-	68	46	-	-	20	-	21	8	-	-	-	43	-	0.63	-	-	0.0003	-	-	
80 B,H	60	0.63	5000	30	38	-	80	68	-	55	30	45	31	10	-	7	-	100 140	63	175 215	1.51	-	2.8 2.9	0.0012	-	0.0014 0.0015
95 B,H	100	1.1	5000	42	42	-	95	76	-	70	35	45	30	12	-	9	-	100 140	73	180 220	2.6	-	3.9 4.2	0.0027	-	0.0028 0.0031
110 A,B,H	160	1.7	5000	48	48	38	110	86	62	80	40	50	34	14	20	11	33	100 140 180	83	190 230 270	3.9	3.5	5.8 6.2 6.6	0.0055	0.0047	0.006 0.0064
125 A,B,H	240	2.5	5000	55	55	45	125	100	75	90	50	50	36	18	23	11	38	100 140 180	103	200 240 280	6.2	5.6	8.2 8.7 9.2	0.0107	0.0095	0.0099 0.010 0.011
140 A,B,H	360	3.8	4900	60	60	50	140	100	82	100	55	65	34	20	28	15	43	140 180	113	260 300	6.9	7	11.8 12.3	0.014	0.015	0.019 0.020
160 A,B,H	560	5.9	4250	65	65	58	160	108	95	108	60	70	39	20	28	15	47	140 180	124	270 310	9.4	9.8	15.2 16.0	0.025	0.028	0.032 0.034
180 A,B,H	880	9.2	3800	75	75	65	180	125	108	125	70	80	42	20	30	15	50	140 180	144	290 330	14	14.2	21.0 21.9	0.045	0.049	0.054 0.058
200 A,B,H	1340	14	3400	85	85	75	200	140	122	140	80	90	47	24	32	18	53	180 200 250	164	350 370 420	20	19.8	30.3 30.9 32.1	0.08	0.085	0.100 0.105 0.110
225 A,B,H	2000	21	3000	90	90	85	225	150	138	150	90	100	52	18	38	18	61	180 200 250	84	370 390 440	24.5	27	39 39.7 41.5	0.135	0.15	0.160 0.170 0.180
250 A,B,H	2800	29	2750	100	100	95	250	165	155	165	100	110	60	18	42	21	69	200 250	205	410 460	34	37	54.7 56.5	0.23	0.25	0.280 0.300

- All dimensions are in mm.
- * = Bore 32 mm for part 5.
- G1 = 2-4mm for sizes 68 to 140, 2-6 mm for sizes 160 to 225 & 3-8 mm for size 250.
- G2 = 5 mm for sizes 80 to 140, 6 mm for sizes 160 to 225 & 8 mm for size 250.
- Part No. 5 is available with different length through Bores D2.
- Max. bore for coupling with or equivalent to DIN 6885 keys.
- For vertical installation contact RATHI.

• In view of our constant endeavour to improve the quality of our products, we reserve the right to alter or change specifications without prior notice.
 • This document is an intellectual property of Rathi Transpower Pvt. Ltd. and subject to copyright.



Rathi Transpower Pvt Ltd
 Gaia Apex, S. No. 33/2D, Viman Nagar
 Pune 411 014.(INDIA)
 Phone : 91-20-30517201
 Fax : 91-20-30517212
 E-mail : enquiry@rathigroup.com
 Website : www.rathicouplings.com

Distributor